

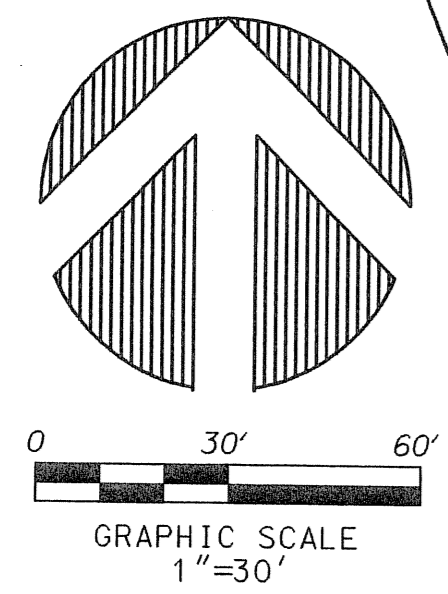
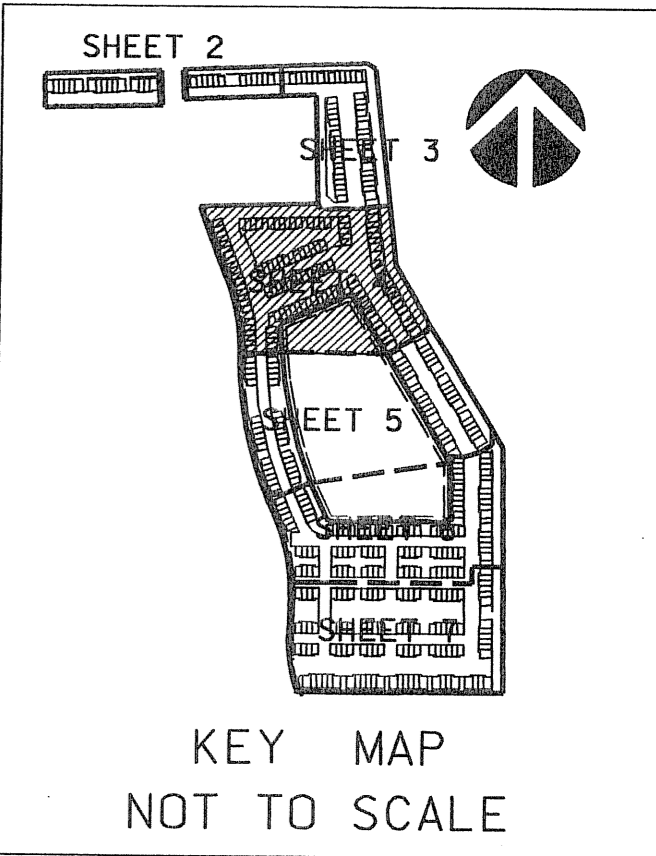
**PERIMETER**  
 SURVEYING & MAPPING  
 Prepared by: Jeff S. Hodapp, P.S.M.  
 Certificate of Authorization No. LB7264  
 951 Broken Sound Parkway, Suite 320  
 Boca Raton, Florida 33487  
 Tel: (561) 241-0988  
 Fax: (561) 241-5182

# CORTINA P.U.D.

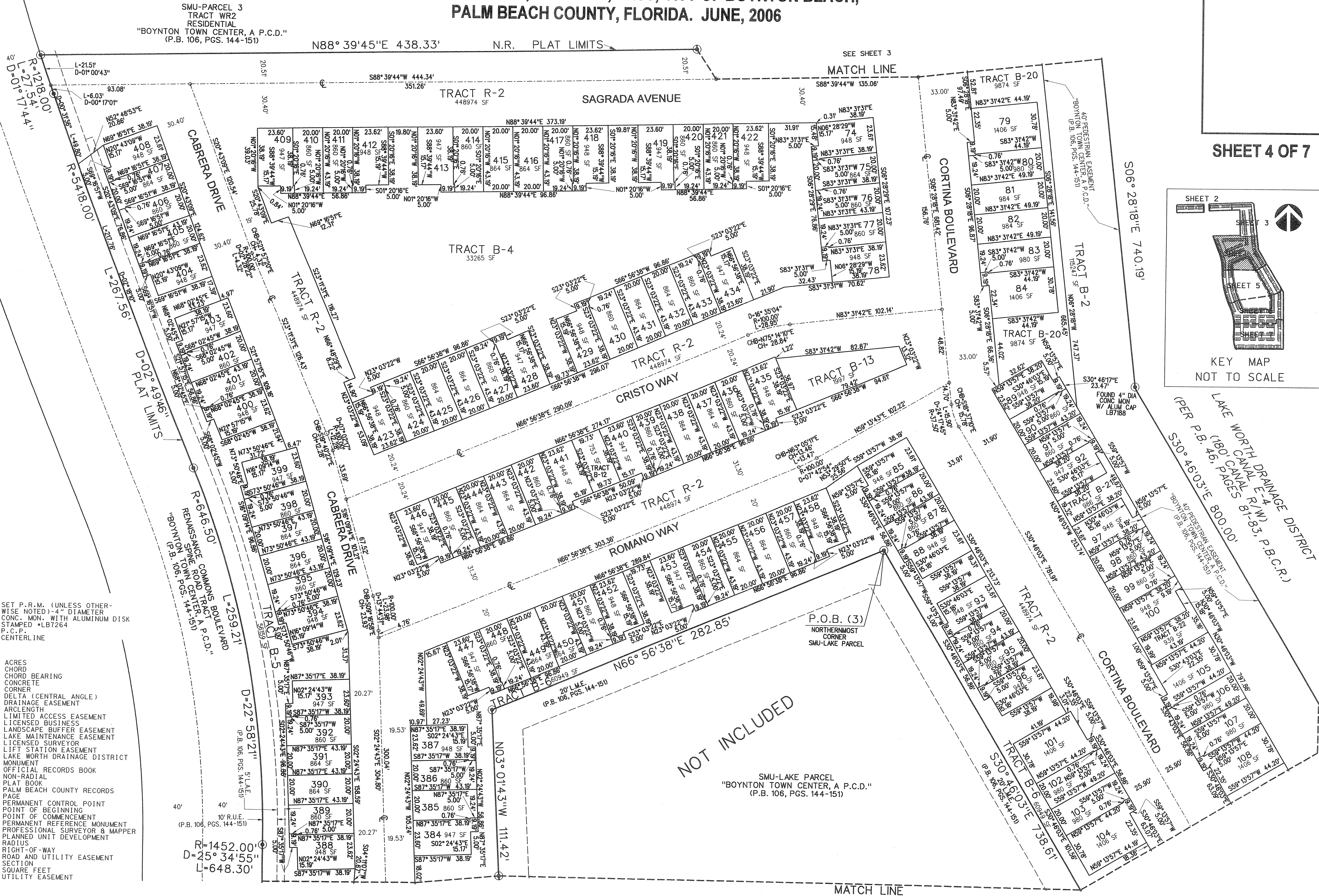
## A REPLAT OF PARCELS "SMU-PARCEL 1 RESIDENTIAL" AND "SMU-PARCEL 2 RESIDENTIAL" "BOYNTON TOWN CENTER, A P.C.D." (P.B. 106, PGS. 144-151, P.B.C.R.) IN SECTION 17, TOWNSHIP 45 SOUTH, RANGE 43, EAST, CITY OF BOYNTON BEACH, PALM BEACH COUNTY, FLORIDA. JUNE, 2006

64

SHEET 4 OF 7



- LEGEND:**
- SET P.R.M. (UNLESS OTHERWISE NOTED)-4" DIAMETER CONC. MON. WITH ALUMINUM DISK STAMPED •LB7264
  - P.C.P. CENTERLINE
- ABBREVIATIONS:**
- AC. ACRES
  - CH. CHORD BEARING
  - CONC. CONCRETE
  - COR. CORNER
  - D.E. DELTA (CENTRAL ANGLE)
  - DR. DRAINAGE EASEMENT
  - L.A.E. LIMITED ACCESS EASEMENT
  - L.B. LICENSED BUSINESS
  - L.B.E. LANDSCAPE BUFFER EASEMENT
  - L.M.E. LAKE MAINTENANCE EASEMENT
  - L.S. LICENSED SURVEYOR
  - L.S.E. LIFT STATION EASEMENT
  - L.W.D. LAKE WORTH DRAINAGE DISTRICT
  - MON. MONUMENT
  - O.R.B. OFFICIAL RECORDS BOOK
  - N.R. NON-RADIAL
  - PLAT BOOK
  - P.B.C.R. PALM BEACH COUNTY RECORDS
  - P.G. PERMANENT CONTROL POINT
  - P.O.B. POINT OF BEGINNING
  - P.O.C. POINT OF COMMENCEMENT
  - P.R.M. PERMANENT REFERENCE MONUMENT
  - P.S.M. PROFESSIONAL SURVEYOR & MAPPER
  - P.U.D. PLANNED UNIT DEVELOPMENT
  - R. RADIUS
  - R/W RIGHT-OF-WAY
  - R.U.E. ROAD AND UTILITY EASEMENT
  - SEC. SECTION
  - S.F. SQUARE FEET
  - U.E. UTILITY EASEMENT



NOT INCLUDED

MATCH LINE  
SEE SHEET 5